



INFLATABLE BOAT USER MANUAL

MANUEL DE L'UTILISATEUR BATEAU GONFLABLE



SECURITY . STABILITY . DURABILITY

seamax inflatable boats

SEAMAX MARINE & OUTDOOR INTERNATIONAL

120-11791 MACHRINA WAY, RICHMOND, BC, CANADA V7A 4V3

www.seamaxcanada.com www.seamaxboat.com

Thank You for your purchase

All of us at SEAMAX CANADA want to thank you for choosing a SEAMAX Inflatable boat. This Owners Manual contains all the safety and operating information you will need to get the most out of your Inflatable boat. It also contains information on how to provide care and maintenance to protect your investment. Store this manual in a safe place for future reference and remember. You may download this manual from our website if you happen to lose this copy.

The operator, passengers and craft are governed by local, national, and when applicable, international rules and regulations of the waterways. If you are not familiar with these rules and regulations, your local Department of Natural Resources can assist you. Safety courses are available from national and local organizations and are highly recommended for anyone who is not familiar with the rules and regulations of safe operation of water vessels.

The product you have purchased comes with a limited warranty from SEAMAX CANADA. The terms and conditions of the warranty are in the Warranty Information Section of this manual. Keep this booklet and your sales slip together for future reference. You may be asked to provide proof of purchase for in-warranty service. For any questions or concerns about our products, please email us and we will respond as quickly as possible.

We DO NOT recommend using a high pressure air compressor to inflate your new boat (Except 12 volt battery powered air pumps). Inflatable boats are not design to be inflated with high pressure air compressors. This may cause the seams to rupture or the air valves to malfunction. This in turn could create a dangerous situation and personal injury could occur if a seam was to rupture.

This type of inflation will void your warranty.

NOTE

Record your Hull Identification Number (HIN) and engine model / serial number. The HIN is located on the back of the boat on the starboard side. The engine model / serial number is located on the swivel bracket. You will need this information to obtain parts, warranty service or provide information to your local law enforcement agency if your boat is lost or stolen.

Boat Model & HIN:
Engine Model & Serial #:
Owner's Name & Tel:
Place of Purchase:
Invoice Date & Invoice Number:

1. WARRANTY AND SERVICE

WARRANTY INFORMATION

SEAMAX Inflatable Boats are warranted to be free of defects in material and workmanship during the following prescribed warranty period. All warranty claims are handled in Canada by Seamax Canada or local Seamax dealer.

The boat' hull, floor, all hull attachments and accessories, but not limited to, floorboards, seats, rope holders, oar locks, oars, rope, air pump, lifting handles, d-rings, oar holders, valves, seat webbings, and transom integrity are covered by this Limited Warranty for one (1) year from the date the product is first sold. All the air holding fabrics are warranted against defects in material or workmanship that cause blistering and delaminating for three (3) years for seams and five (5) years for (PVC) fabrics. The repair, replacement of parts, or the performance of service under this warranty does not extend the life of this warranty beyond its original expiration date. Unexpired warranty coverage can be transferred to a subsequent purchaser upon proper registration of the product.

This Warranty applies only to defects in material and workmanship; it does not apply to normal wear and tear, or to damage caused by: (1). Neglect, lack of maintenance, accident, abnormal or improper use; (2) Incorrect assembly or over inflation; (3). Use of an accessory or part neither manufactured or sold by Seamax; (4). Participating in or preparing for races or other competitive activity; (5). Alteration or removal of parts; (6). Improper Protection against UV-light; (7). Commercial use.

SEAMAX limited warranty does not cover incidental or consequential costs and expenses such as haul-out, launching, towing transport and storage charge, telephone or rental charges of any type, inconvenience, waste of time or income losses, or other consequential damages.

PRODUCT REGISTRATION

To be eligible for warranty coverage, the product must be registered with SEAMAX CANADA within 90 days from purchase other than purchasing from Seamax Directly or Seamax Online. When you receive the product, you will be required to complete the warranty registration card and submit to SEAMAX CANADA via E-mail, FAX or mail.

SEAMAX limited warranty is transferable to a subsequent purchaser for the remainder of the unused portion of the warranty. This will not apply to products used for commercial applications. To transfer the warranty to the subsequent owner, send us the new owner Boat registration Card and a copy of the bill of sale or purchase agreement within 30 days of transfer. You may request a new warranty card from Seamax Canada.

Submitting the SEAMAX Inflatable Boat Registration Card is the only valid warranty registration identification. Warranty Claims may not be accepted without presentation of this registration card.

The consumer must provide COMPLETE access to the product for warranty service by delivering the product for inspection to SEAMAX CANADA or a dealer authorized to service the purchaser's product.

Our obligation under this warranty shall be limited to repairing a defective part, or at our discretion, refunding the purchase price or replacing such part or parts as shall be necessary to remedy ANY defect in material or workmanship as covered by this warranty.

PRODUCT PURCHASE & SUPPORT

Headquarter (Canada)

120-11791 Machrina Way, Richmond, BC, Canada V7A 4V3

<http://www.seamaxcanada.com> <http://www.seamaxboat.com>

Email: support@seamaxcanada.com sales@seamaxboat.com

TEL: 1-877-907-7766 1-604-277-7766 Fax: 1-604-277-3360

If you need assistance or service, please first refer to this booklet. Additional help is available by visiting our website www.seamaxcanada.com or visiting any local Seamax dealers. Remember, your satisfaction with your inflatable boat is very important to us.

SALE & SUPPORT



SEAMAX CANADA

2. GENERAL INFORMATION

BOATER'S RESPONSIBILITIES

The operator (driver) is responsible for the correct and safe operation of the boat and safety of its occupants and general public. It is strongly recommended that each operator (driver) read and understand this entire manual before operating the boat. Be sure at least one additional person on board is instructed in the basics of starting and operating the outboard and boat handling in case the driver is unable to operate the boat. Remember in Canada you must have a boating certification license for all motorized watercraft. All local rules and regulations apply to all waterways.

OPERATING YOUR BOAT

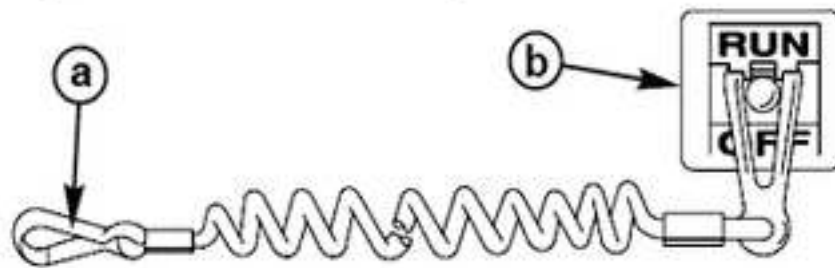
Read and understand this manual carefully. Learn how to operate your boat properly. If you have any questions or concerns, please feel free to contact your local dealer or SEAMAX CANADA. Safety and operating information that is practiced, along with using good common sense, can help prevent personal injury and product damage. You can visit the following websites for more information on boat safety.

CANADA - www.boatingsafety.gc.ca

USA - www.uscgboating.org

LANYARD STOP SWITCH

The purpose of a lanyard stop switch is to shut down the engine in an emergency situation when the operator moves from a safe operating distance (as in accidental ejection from the operator's position) to activate the switch. Tiller handle outboards and some remote control units are equipped with a lanyard stop switch. A lanyard stop switch can be installed as an accessory, generally on the dashboard or side adjacent to the operator's position.



a - Lanyard cord

b - Lanyard stop switch

Read the following Safety Information before proceeding.

⚠ WARNING

Should the operator fall out of the boat, the possibility of serious injury or death from being run over by the boat can be greatly reduced by stopping the engine immediately. Always properly connect both ends of the stop switch lanyard to the stop switch and the operator.

PROTECTING PEOPLE WHILE CRUISING

It is very difficult for a person standing or floating in the water to take quick action to avoid a boat heading in his or her direction, even at slow speed. Always slow down and exercise extreme caution any time you are boating in an area where there might be people in the water. Whenever a boat is moving (coasting) and the outboard gear shift is in the neutral position, there is sufficient force by the water on the propeller to cause the propeller to rotate. This neutral propeller rotation can cause serious injury. Shift outboard into neutral and shut off the engine before allowing people to swim or be in the water near your boat.

⚠ WARNING

Stop your engine immediately whenever anyone in the water is near your boat. Serious injury to the person in the water is likely if contacted by a rotating propeller, a moving boat, a moving gearcase, or any solid device rigidly attached to a moving boat or gearcase.

WAVE AND WAKE JUMPING

Operating recreational boats over waves and wakes is a natural part of boating. However, when this activity is done with sufficient speed to force the boat hull partially or completely out of the water, certain hazards arise, particularly when the boat re-enters the water.

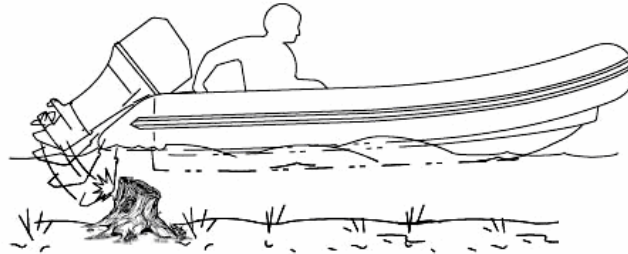
The primary concern is the boat changing direction while in the midst of the jump. In such a case the landing may cause the boat to veer violently in a new direction. A sharp change in direction can cause occupants to be thrown out of their seats or out of the boat. Use extreme caution when near other boats.

There is another hazard from allowing your boat to launch off a wave or wake. If the bow of your boat pitches down far enough while airborne, upon water contact it may penetrate under the water surface and submarine for an instant. This will bring the boat to an instant stop and can send the occupants flying forward. The boat may also steer sharply to one side on impact with the water. Please be aware of these wave and wake hazards and use extreme caution.

⚠ WARNING

Avoid serious injury or death from being thrown within or out of a boat when it lands after jumping a wave or wake. Avoid wave or wake jumping whenever possible. Instruct all occupants that if a wake or wave jump occurs, get low and hang on to any boat hand hold.

IMPACT WITH UNDERWATER HAZARDS



⚠ WARNING

To avoid serious injury or death from all or part of an outboard coming into the boat after striking a floating or underwater obstacle maintain a top speed no greater than minimum planing speed.

Reduce speed and proceed with caution whenever you drive a boat in shallow water areas, or in areas where you suspect underwater obstacles may exist. These obstacles could be struck by the bottom leg of the outboard or the boat bottom and cause severe damage to the boat and or motor.

Travel these areas with extreme caution, to reduce injury or impact damage from striking a floating or submerged object reduce your boat speed.

BOATING SAFETY

In order to safely enjoy the waterways, familiarize yourself with local and other governmental boating regulations and restrictions, and consider the following suggestions. . Have an approved personal flotation device of suitable size for each person aboard the vessel (it is the law) and have it readily accessible. Do not overload your boat. Most boats are rated and certified for maximum load (weight) capacities (refer to your boat capacity plate). Perform safety checks and required maintenance. Follow a regular schedule and ensure that all repairs are properly made. Know and obey all nautical rules and laws of the waterways. Boat operators should complete a boating safety course. And the boat operator may need to pass a Pleasure Craft License to operate any motorized craft on the water (mandatory in Canada)

IMPORTANT NOTE

- 1) Always have on hand enough life-Jackets (or personal floatation devices) with you for all your Passengers, this is a legal requirement.
- 2) Check the pressure and the condition of the boat before you start sailing.
- 3) Pay close attention to the weather conditions for your safety.
- 4) Do not forget important papers like maps or a sailing license.
- 5) Make sure you take repair kits, first aid kit and a pump with you.
- 6) Make sure you do not exceed the maximum recommended number of persons on the capacity plate
- 7) Do not exceed the recommended maximum horsepower rating.

Use of alcohol or drugs is prohibited while operating a water craft. Alcohol or drug use impairs your judgment and greatly reduces your ability to react quickly. This carries the same penalty as driving a car if convicted.

Prepare other boat operators. Instruct at least one other person on board in the basics of starting and operating the outboard, and boat handling, in case the driver becomes disabled or falls overboard. Stop the engine whenever passengers are boarding, unloading, or are near the back (stern) of the boat. Just shifting the outboard into neutral is not sufficient. The operator of the boat is responsible by law to maintain a proper lookout by sight and sound. The operator must have an unobstructed view particularly to the front. Never operate your boat directly behind a water skier in case the skier loses control and hits the water .Use extreme caution around any swimmer, diver or persons in the water.

BOAT CAPACITY PLATE

Seamax inflatable boats are certified by transport Canada and carry our own manufacture's identification code. Each Seamax boat carries a capacity plate along with a warning plate on the transom as required by Transport Canada .This certification along with the CE certification allows Seamax Boats to be sold world wide.

BOAT CATEGORY

This table shows that boat is designed and constructed for:

Categories	Navigation	Wind Force and Wave Height
C	Inshore	Designed for voyages in coastal waters, large bays, estuaries, lakes and rivers where conditions may experience wind force 6 (Beaufort scale) and wave heights up to 2 m (6.5 ft.)
D	Sheltered Water	Designed for voyages on sheltered coastal waters, small bays, small lakes, rivers, and canals where conditions may experience wind force 4 (Beaufort scale) and wave heights up to 0.5 m (1.5 ft.).

3. OPENING YOUR BOAT

THE UNPACKING

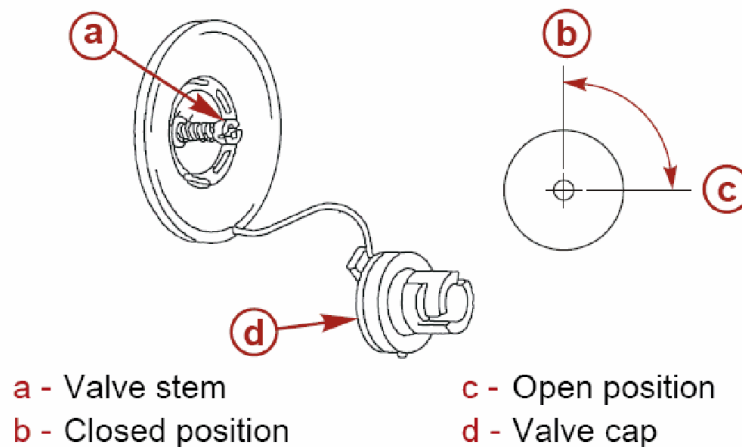
Never use a sharp knife to open the box, it may damage the boat.

Before you unfold the boat, take a good look at how the boat is folded together. Unfold the boat on a flat surface, inspect and check if all the components are in new condition and not damaged in anyway such as: valves, plywood seat, foot pump, oars, aluminum side joiners, floor boards, repair kit and carrying-bag.

Remove all components from the box, Find a flat surface and unfold the boat, take the floor boards out along with the side joiners. Inspect and familiarize yourself with all the components and the safety features of your new inflatable boat. Knowing the functions of all the components of your boat is very important .Not only for safety reasons but to assist in any questions or concerns you may have.

VALVES

All air valves are preassembled and tested for leaks. To fill remove the front cap and insert pump-hose twist to lock, ensure that the air valve is in the inflate position. You will notice that there is a 2 position valve stem .push and twist for the inflate position repeat the opposite direction for the deflate position Each SEAMAX inflatable boat comes with a spare valve and valve wrench.



GETTING STARTED

Locate the foot pump and familiarize yourself with the operation and installation of the air hose into the side chamber air valves. Inflate the side chambers to about 20% of capacity .this is done to pull the floor fabric

away from the side chambers and makes the floor installation much easier.

BEFORE ASSEMBLE CHECK OVER

Double check all valves and make sure they are all in the closed position, you can also use the included valve wrench to ensure all the valves are seated tightly against the floor material. To ensure that the valves are in the correct position push in and twist the valve stem should be in the up position. To determine this use the foot pump to pump some air in the floor and then remove hose .if the valve stem is in the correct position the air will not escape, if it does push down valve stem and twist until valve stem pops up.



4. AIR FLOOR BOAT SETUP

ABOUT ARMAT FLOOR

The air floor is designed to be light weight and installed once, its design allows the floor to remain in the boat and be deflated and folded up with the rest of the boat. Seamax air mat floors are specially designed using two layers of fabric held together by thousands of polyester cross threads. Inflating this type of fabric with high pressure air provides a very rigid yet light weight floor. This provides the versatility of a tradition hard floor with the ease of installation.



AIRMAT FLOOR WITH GAS TANK PAD



PLYWOOD SUPPORT AT THE BACK

AIR FLOOR BOAT ASSEMBLE

Unfold the floor on a clean flat surface that is free of any sharp objects that could damage the air mat
Lay the floor flat and ensure that all valves are snug and the air valve is in the closed position. Install plywood slat in holder (under the 2 strap) this is to provide the support to push down the inflatable keel to provide a deep V keel under the boat .check over to make sure there are defects.

Inflate floor with provided foot pump, once inflated inspect and become familiar with the design and how it will fit in the boat. Once you are familiar with the floor deflate (push the valve stem in and twist) the air mat. Take the air series boat and lay out on a clean flat surface, pump the air chambers of the boat to about 50%. This will pull the fabric away from the inner sides of the chambers of the boat to make installing the air mat much easier. Install the air mat with plywood support down into the boat.



Make sure that the hole in the front lines up with the valve on the inflatable keel, once installed in the bottom of the boat finish inflating the sides , once that is done inflate the air mat floor. You can double check the positioning as you go along by pushing down on the edges of the floor as you inflate it .When you have the floor inflated and in the proper position, inflate the keel. The plywood support will force the keel down to provide a deep V on the bottom of the boat; this will provide added stability in the water

Tip: You can inflate and deflate the boat and air mat floor together and roll up as one piece

Tip: Wash and clean the sand and dirt from the air mat floor after each use to avoid sand or dirt from getting inside and damaging the air valve

Note: Inflate the keel chamber only after you have inflated all other chambers of the boat and floor.

Note: The first time you install floor and inflate the boat it may take up to 45 minutes to complete.

Pressure Standard:

- Tube air chambers – Max 3.6PSI / 25kPa
- Inflatable Keel chamber – Max 5.0 PSI / 35kPa
- Airmat floor chamber – Max 10 PSI / 70 kPa

NOTE: Detail Photo Instruction for Setup is available on www.seamaxboat.com.

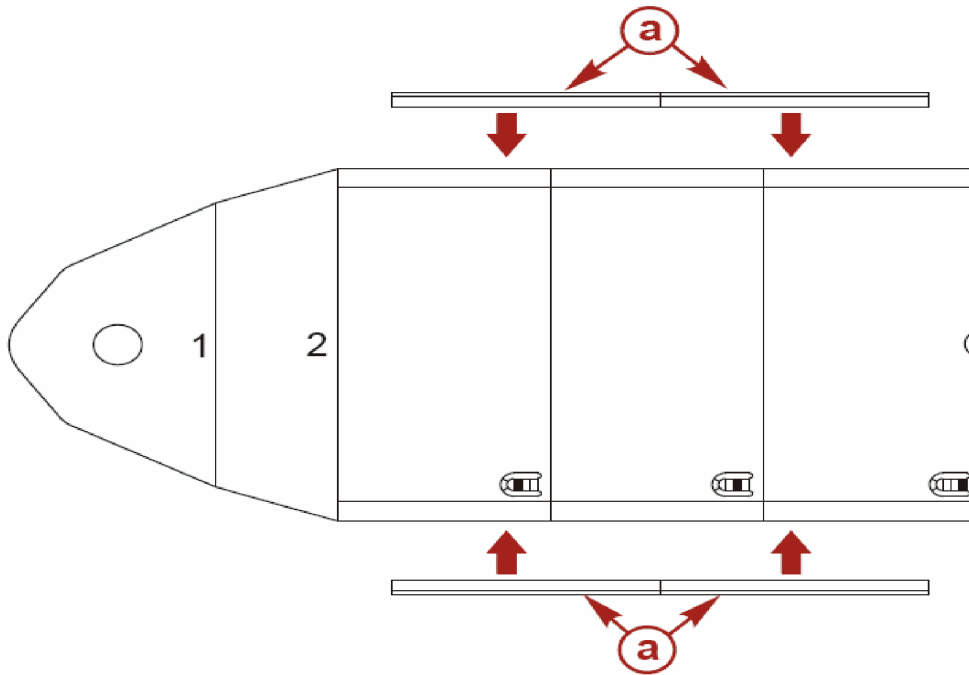
Special Pump for Seamax Airmat floor inflatable boats:

- We will give double stages foot pump for Seamax Air Series from 2011 model. It can support 4.4PSI at lower pressure and 14.7 PSI at high pressure.
- We also have 12V electronic pump for sale, maximum pressure 11.6 PSI.

5. ALUMINUM FLOOR BOAT SETUP

ALUMINUM FLOORBOARDS

The floor boards included with each series will vary according to the size of the boat .The floor boards must be installed into the boat before the boat is inflated. Make sure you place the floorboards in the boat in numerical order. 1 fits into 2, 2 fits into 3, 3 fits into 4 (if required) 4 fits into 5 (if required)



a - Side joiners

- **Floor boards (Aluminum & Plywood) and side joiners number for each model**

Model	Ocean290	Ocean320	Ocean380/T	Ocean430/T	Ocean500T
Floor Boards	4	4	5	6	6
Side Joiners	2	4	4	4	4

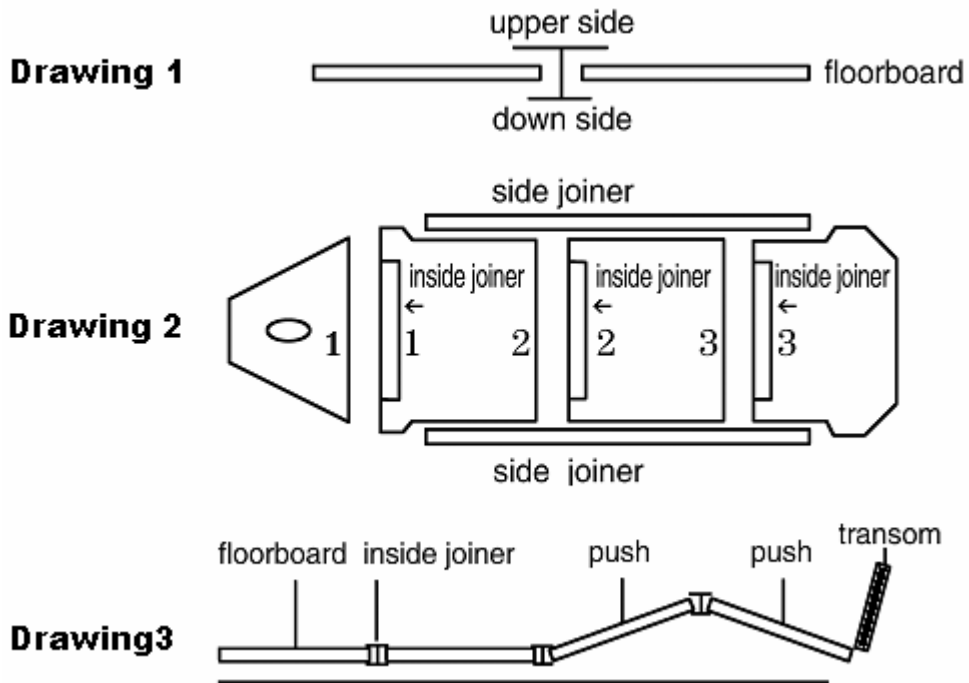
Model	eMarine305	eMarine365	Sport240	Sport270	Sport360	Sport420
Floor Boards	4	5	4	4	5	5
Side Joiners	2	4	2	2	4	4

Model	HD330	HD360	HD380	HD470	AIR270	AIR320
Floor Boards	4	5	5	6	4	4
Side Joiners	4	4	4	4	2	4

PLACEMENT OF THE FLOORBOARDS

Tips:

- You will notice that the first couple of times you install the floorboards it will be a little difficult this is normal, After a while it will all go easier because the material will have stretched.
- When you place the floorboards, pull up the fabric a bit to avoid damage to the outside chambers.
- Once inflated a few times the installation of the floor board will be very easy.



Between each floorboard you have to install an inside-joiner. Place the inside-joiners with the broad side up (See drawing 1, 2). With each boat there are two side-joiners which you have to install on the sides of the floorboards. These joiners lock the floor in place to become a very stable platform for the boat

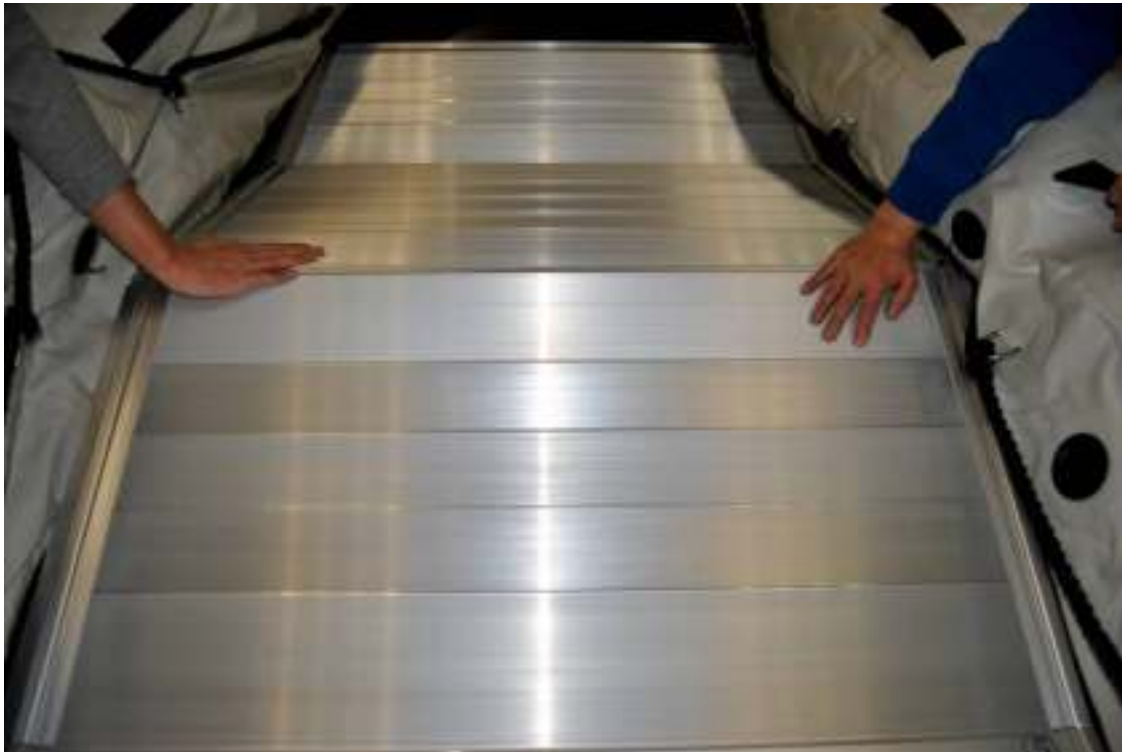
A. Clear a flat surface that is clean and free of sharp objects.

Unfold the boat and spread it out flat. Start with the front floorboard; slide it into the bow, push this as far in the nose as possible or until the valve base of the keel is in the middle of the opening in the front floorboard.

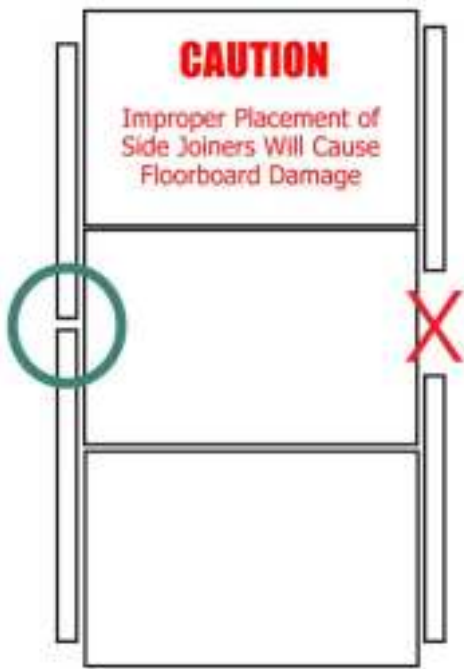


B. Place the rear floorboard (the highest number on the board); push this one as far as possible under the transom.

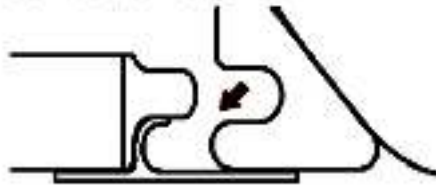




- C. Slightly inflate the keel in order to raise the floorboards off the floor. Attach the side joiner onto each side of floorboards within the recessed floor portion.**



Insert Side Joiner



ABOUT INFLATING

IMPORTANT: Do not inflate or deflate one air chamber at a time. When inflating or deflating, maintain a balanced air pressure between air chambers to prevent stress or potential damage to the inside diaphragms that separate the air chambers.

NOTE: Install the removable seat before the boat is fully inflated. Hook the flanges that are located on the bottom of the seat into the nylon straps on the side air chambers.

INFLATE TUBE CHAMBERS AS FOLLOWS:

1. Fit the floorboards into the boat. Refer to Floorboard Assembly.
2. Unscrew the valve; make sure the valve stems are in the closed (intake) position.
3. Attach the air hose adapter to the air valve. Starting at one of the air valves, inflate each air chamber in turn, inflating only a quarter of the way full.
4. Repeat this procedure to evenly fill the air chambers until the air chambers are filled to the recommended air pressure of 0.25 bar (3.6 psi).
5. A good indication that the air chambers are filled correctly is the firmness of the chambers.



Unscrew the valve cap from the keel air chamber valve by turning a quarter of a turn counterclockwise. Push in on the valve stem and rotate to the closed position. Attach the air hose adapter to the air valve. Inflate the keel to the recommended air pressure of 3.6 psi. After inflation, install the valve caps tight (turn clockwise). Now place the oars on the oar pins and lock into the holders and your boat is ready to sail.

TIP:

- Do not inflate the keel until floorboards are installed.
- Start by inflating both side chambers. Then inflate the nose.
- After you have inflated these three compartments you can start inflating the keel.
- Remember that air temperature and direct sunlight can have an effect on the air pressure.
- (± 1 degree changing = Pressure ± 0.004 bar / 0.576 PSI)

OAR'S INSTALLATION

Two Pieces of foldable oars

- Two piece oar, Blade piece & Handle piece
- Standard: Gray & Black Color; 4.3FT & 5.3FT Total Length
- Oar handle diameter: 1 ¼ inch
- Hole diameter of oar lock stick: 3/8 inch

Step 1:

- Insert the Blade piece to the oar holder, not just click in since new holder may be tight.



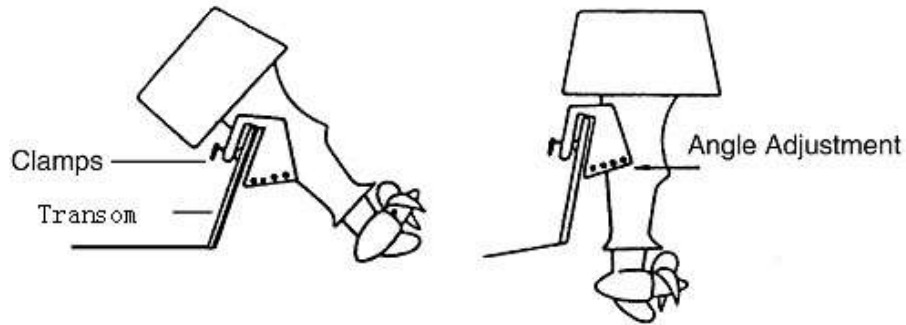
Step 2:

- Put the rear piece into the oar lock stick. Join two pieces together, click the oar click in.
- If it is not fitting well, switch over to other piece to try again. Screw up the oar lock cap.
- Finished & ready for use.



USING AN OUTBOARD MOTOR

Choose an outboard for the boat that is in accordance with the horsepower range and limit. Refer to the Specification table in this manual or the manufacturer's plate on the boat for the maximum outboard capacity. Install the outboard along the centerline of the boat transom. Fasten the outboard to the transom following the recommended installation instructions provided with the outboard or its manufacturer.



Check outboard for tightness on transom before each use. When you install an outboard motor, make sure you place it on the motor bracket at the transom and tighten the butterfly bolts to the transom. Check after 15 minutes of boating to ensure the butterfly bolts are still tight to the transom.

SELF DRAINING

SEAMAX inflatable boats come with two styles of self draining system. To test the valve, while in a forward motion remove the plug from the drain and the water will automatically run out. The inner diaphragm will prevent water from returning. After the water has been drained, replace the plug. Make sure you have pulled out the black plug when you are sailing or towing the boat. It is important to keep the self-draining system clear.

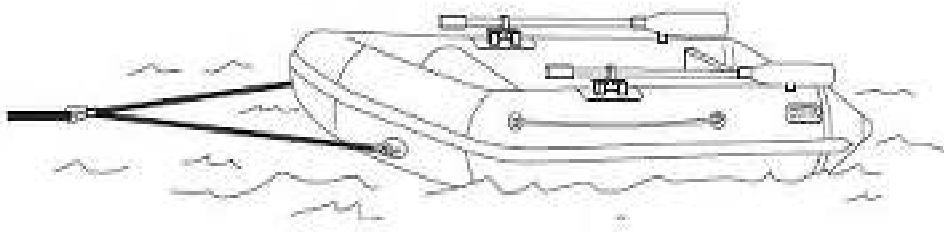


PRE OPERATING CHECK LIST

1. Check the inflation pressure of the air chambers. Remove any obstruction from the drain valve.
2. Check the outboard for tightness on the transom.
3. Know the fuel capacity and cruising range.
4. Check that the lanyard stop switch for the outboard works correctly.
5. Be sure the boat is not overloaded. Check the boat capacity plate for weight capacity
6. Be sure there is an approved personal flotation device of suitable size for each person aboard and readily accessible (by law).
7. Check that the paddles are in the boat in case of engine trouble.
8. Be sure the operator knows safe navigation, boating and operating procedures.
9. Have a ring type life buoy or buoyant cushion designed to be thrown to a person in the water.
10. Arrange the passengers and load in the boat so the weight is distributed evenly and everyone is seated properly.
11. Instruct at least one passenger in the basics of boat handling and the starting and operation of the outboard, in case the driver becomes disabled or falls overboard.
12. Before departing, tell someone where you are going and what time you expect to return.
13. No alcohol or drugs on board, it is illegal to operate a boat while under the influence of alcohol or drugs.
14. Know the waters and area you will be boating; tides, currents, sand bars, rocks, and other hazards.
15. Check that all personal safety gear is on board (whistle or noise maker, bailing can, floating rope, water proof flashlight)
16. Ensure the operator has a boating license

TOWING THE BOAT

If the inflatable boat is to be towed by another boat, the inflatable boat must be empty. Remove outboard, fuel tank, and equipment. Attach a line between the towing rings to form a bridle. Attach a towing line to this bridle and tow the boat at slow speed.



CHAMBER PRESSURE LOSS

If one of the air chambers should accidentally deflate while you are operating the boat, shift the weight to the opposite side of the deflated chamber and slowly head for shore.

Due temperature difference the pressure can increase or decrease. It may not lose more than 20% of the pressure in 24 hours by the Inflatable Boat's Standard regulations check the following steps if this should happen

1. Ensure all valves are securely tightened
2. Check if all valves are clean.
3. Inspect for any damage to the air chambers.
4. Check the seams.
5. Use a mixture of water and liquid soap to test for leaks .this mixture will turn to bubbles at the leak

WATER INSIDE THE BOAT

1. Check if the self draining-valve is clean and clear.
2. Check for damage to transom
3. Take out the floorboards, fill the boat with water on a dry surface watch for wet spots

HULL IDENTIFICATION NUMBER (HIN)

HIN Plates provides the information to locate lost, stolen or boats subject to recalls. So please remember to register your inflatable boat with your local dealer.

 CANADIAN COMPLIANCE NOTICE AVIS DE CONFORMITÉ CANADIEN MAXIMUM RECOMMENDED SAFE LIMITS LIMITES MAXIMALES DE SÉCURITÉ RECOMMANDÉES	 - <input type="text"/>	kg	lbs
	 +  = 7	kg	lbs
7	kw	hp	lbs
<small>THE MAXIMUM RECOMMENDED SAFE LIMITS MIGHT HAVE TO BE REDUCED IN ADVERSE SEA AND WEATHER CONDITIONS. LES LIMITES MAXIMALES DE SÉCURITÉ RECOMMANDÉES PEUVENT DEVOIR ÊTRE RÉDUITES DANS LES CONDITIONS DE MER ET DES CONDITIONS MÉTÉOROLOGIQUES DIFFICILES.</small>			
Model: MOBILE	LENGTH: LONGUEUR	ft	m
H.I.N.# - SEAMAX MARINE & OUTDOOR INTL. (YLS) RICHMOND, BRITISH COLUMBIA, CANADA WWW.SEAMAXBOAT.COM WWW.SEAMAXCANADA.COM	 <small>assembled in China</small>	3.6psi - 0.25bar	
CATEGORY / CATÉGORIE: D MAXIMUM WAVE / VAGUE MAXIMALE: 0.5 metre MAXIMUM WIND SPEED / VITESSE DE VENT MAXIMALE: 25 knots/knotsde	<small>THE MANUFACTURER DECLARES THAT THIS PRODUCT COMPLIES WITH THE CONSTRUCTION REQUIREMENTS OF THE SMALL VESSEL REGULATIONS AS THEY READ ON THE DAY ON WHICH THE CONSTRUCTION OF THE VESSEL WAS INITIATED OR ON THE DAY ON WHICH THE VESSEL WAS SHIPPED. LE FABRICANT ATTESTE QUE CE PRODUIT EST CONFORME AUX EXIGENCES DE CONSTRUCTION AU RÉGLEMENT SUR LES PETITS BÂTIMENTS EN VOIEUR ALA DATE DU DÉBUT DE SA CONSTRUCTION OU DE SON IMPORTATION.</small>		

7. REPAIR & MAINTENANCE

REPAIR AIR CHAMBER BY PVC FABRIC

The repair kit included with the boat is a one part glue operation and used for emergency minor repair. For a permanent repair, a two part adhesive for PVC fabric should be used. This two part adhesive and patching materials for PVC fabric are available in the repair kit.

Small tears and punctures in the air chambers which are 1cm (0.393 in.) or less, can be repaired in an emergency. Larger areas, or if the patch will overlap a seam, should be patched by a professional repair person. If you are not sure of the repair procedure, you can contact SEAMAX customer support by visiting our website.

For the best results when gluing, the relative humidity should be less than 60%, ambient air temperature should be between 18C to 25C (65 F to 77F) and not repaired in direct sunlight.

Cut out a patch large enough to overlap the damaged area by 3cm (1.2 in.) on all sides. Center the patch over the damaged area, and with a pencil trace the outline of the patch. Apply masking tape around the perimeter of the outlined patch area to ensure a tight and clean glue line.

Clean the patch area on the boat as well as the backside of the patch, its best to use M.E.K. (Methyl Ethel Ketone) patching solvent and cleaner. Use rubber gloves when handling solvent. After applying the solvent, you will notice that the area will become tacky. This tackiness ensures good glue adhesion.

Apply three thin layers of adhesive with a short bristle brush, in a circular pattern on both the backside of the patch and the patch area on the boat. Allow each layer to dry for 5 minutes before applying the next layer. After applying the third layer, wait 5 minutes and then apply the patch to the prepared area and press down firmly. Using a smooth object (a back of a tablespoon works well), working from the center of the patch to the outside, force out any air bubbles that may have been trapped under the patch. After the patching is complete remove the masking tape, place a 5 pound weight onto the patch and allow 24 hours drying time before pressurizing the repaired air chamber.

Important: Repairing is only possible with a dry atmosphere and the air humidity may not be higher than 60%.

NOTE: PVC Repair Photo Instruction is available on our website at www.seamaxboat.com.

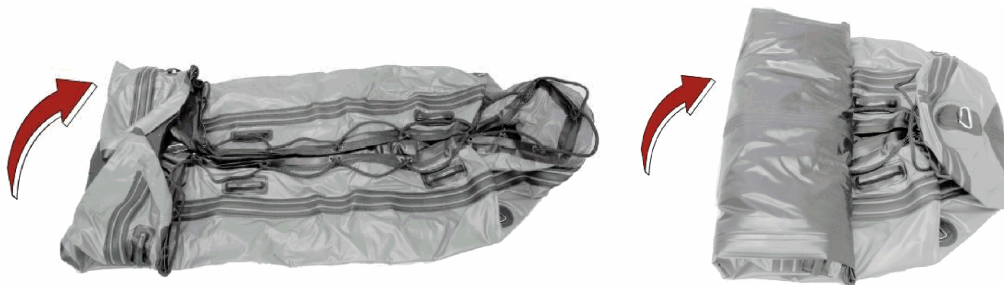
MAINTENANCE

Your Boats fabric is PVC; you can keep it clean with simple soap and the water. When you find persistent stains like oil and tar, you can remove them with thinner, after you have used thinner; always clean the boat with fresh water. It is very important to clean the valves at the same time. The transom, wooden seat and floorboards are made out of plywood and are treated with a waterproof paint. The aluminum is metal; you can use W40 to keep the contact smooth and clean. If damage has accord to the transom or seat repair the wood and scour and repaint with marine grade paint to prevent water damage to the wood

STORAGE

The boat should be cleaned and rinsed with fresh water before being placed in long term storage. Refer to the Cleaning Procedure. To prevent fabric discoloration from marine growth or polluted waters, do not store the boat in water for extended periods of time. After washing, allow the boat to dry thoroughly before placing into storage. The boat can be stored inflated or deflated. Store the boat in a cool, dry area that is protected from excess exposure from the sun. Cover the boat to block direct sunlight exposure if the boat is to be stored outside for an extended period of time.

The boats PVC material is flammable! Keep away from open flame!



8. BOAT SPECIFICATIONS

SEAMAX STYLES



V-Hull consists of a separate longitudinal inflation tube or wood keel located beneath the floorboards. Once inflated, it provides a moderate V-keel at the bow of the boats by pushing the fabric floor down and away from the floorboards. Handling and performance is greatly improved as the keel cuts through the water cleanly. An added benefit is the extra buoyancy and flotation.

SEAMAX EXCLUSIVE LINE – HD SERIES

We keep bringing more models to North American, if the boat's model you purchased is not included in this manual; please ask the seller or consult our similar model on the manual.

Kaygee Boat Sales (Edmonton, AB) www.kaygeeinflatableboats.com

Email: gawood@shaw.ca **Tel:** 1-780-906-4991



AIR SERIES

SEAMAX AIR SERIES with the Round Nose design helps to provide maximum space in the boat. SEAMAX AIR SERIES uses an air mat floor, the floor is specifically designed with thousand of polyester threads crisscrossing one another, and once it is inflated to a high pressure it becomes as tough and rigid as a conventional wooden floor boat. Once deflated the boat and floor roll up together and take up very little space for storage.



Seamax AIR Series Specifications

2012 model	AIR230	AIR270	AIR320
Overall length	7.5 feet / 2.30 meter	9.0 feet / 2.70 meter	10.5 feet / 3.20 meter
Beam (overall width)	4.3 feet / 1.31 meter	5 feet / 1.51 meter	5 feet / 1.51 meter
Inner length	4.8 feet / 1.47 meter	5.6 feet / 1.70 meter	7.1 feet / 2.16 meter
Inner minimum width	2.0 feet / 0.60 meter	2.2 feet / 0.67 meter	2.2 feet / 0.67 meter
Boat overall weight	75 Lbs / 34 kg	93 Lbs / 42 kg	110 Lbs / 50 kg
Gross loading	458 Lbs / 208 kg	822 Lbs / 373 kg	987 Lbs / 448 kg
Passengers	2 Persons	3 Persons	4 Persons
Boat HP rating	6 HP / 4.4 Kw	10 HP / 7.4 Kw	15 HP / 11.0 Kw
Outboard shaft	15" short shaft	15" short shaft	15" short shaft
Max motor weight	88 Lbs / 40 kg	132 Lbs / 60 kg	132 Lbs / 60 kg
Pontoon chambers	3 individual chambers	3 individual chambers	3 individual chambers
Tube diameter	13.8 inch / 35 cm	16.5 inch / 42 cm	16.5 inch / 42 cm
Other chamber(s)	keel & floor chamber	keel & floor chamber	keel & floor chamber

Continue...

	AIR230	AIR270	AIR320
Pontoon air pressure	3.6 PSI / 25 Kpa	3.6 PSI / 25 Kpa	3.6 PSI / 25 Kpa
Over pressure valve	1 built in	1 built in	1 built in
Air floor pressure	Max 10 PSI / 80 Kpa	Max 10 PSI / 80 Kpa	Max 10 PSI / 80 Kpa
Bow handle for trailer	stainless steel ring	stainless steel ring handle	stainless steel ring handle
Outside hard handles	2 x rear hard handles	2 x rear hard handles	2 x rear hard handles
Transom lift rings	2 x stainless steel (option)	2 x stainless steel (option)	2 x stainless steel (option)
Bow towing rings	large stainless ring x 2	large stainless ring x 2	large stainless ring x 2
Lift rings on pontoon	medium stainless ring x 4	medium stainless ring x 4	medium stainless ring x 4
Rings for bow bag	small stainless ring x 4	small stainless ring x 4	small stainless ring x 4
Bench seat	one seat - 29"x8"	one seat - 34"x8"	two seats - 34"x8"
Seat position	one seat position	one seat position	two seat positions
Aluminum oar	4.3 feet aluminum oar x 2	5 feet aluminum oar x 2	5 feet aluminum oar x 2

SPORT SERIES & EMARINE SERIES

SEAMAX SPORT comes with updated aluminum floor boards. Aluminum Floor makes it the ideal choice for day tripping and fishing activities alike. Its aluminum frame is strong and durable to provide years of dependable service.



Seamax SPORT & EMARINE Specifications					
2012 model	SPORT240	SPORT270	EMARINE305	SPORT360/365	SPORT420
Overall length	7.9 ft / 2.40 m	9.0 ft / 2.70 m	10.0 ft / 3.05 m	11.8 ft & 12.0 ft	13.8 ft / 4.20 m
Beam (max width)	4.3 ft / 1.31 m	5 ft / 1.51 m	5 ft / 1.51 m	5.5 ft / 1.68 m	6.2 ft / 1.90 m
Inner length	5.1 ft / 1.55 m	5.6 ft / 1.70 m	6.5 ft / 1.98 m	8 ft / 2.44 m	9.6 ft / 2.93 m
Inner min width	2.0 ft / 0.60 m	2.2 ft / 0.67 m	2.2 ft / 0.67 m	2.6 ft / 0.80 m	3.0 ft / 0.90 m
Boat overall weight	88 Lbs / 40 kg	106 Lbs / 48 kg	114 Lbs / 52 kg	158 Lbs / 72 kg	198 Lbs / 90 kg
Gross loading	453 Lbs / 206 kg	750 Lbs / 340 kg	858 Lbs / 390 kg	1171 Lbs / 531kg	2334 Lbs / 1059kg
Passengers	2 Persons	3 Persons	4 Persons	5 Persons	8 Persons
Boat HP rating	6 HP / 4.4 Kw	10 HP / 7.4 Kw	15 HP / 11 Kw	20 HP / 14.7 Kw	30 HP / 14.7 Kw
Outboard shaft	15" short shaft	15" short shaft	15" short shaft	15" short shaft	15" short shaft
Max motor weight	88 Lbs / 40 kg	132 Lbs / 60 kg	132 Lbs / 60 kg	220 Lbs / 100 kg	253 Lbs / 115 kg
Pontoon chambers	3 chambers	3 chambers	3 chambers	3 chambers	5 chambers
Tube diameter	13.8 " / 35 cm	16.5 " / 42 cm	16.5 " / 42 cm	17.3 " / 44 cm	19.7 " / 50 cm
Other chamber(s)	1 keel chamber	1 keel chamber	1 keel chamber	1 keel chamber	1 keel chamber
Over pressure valve	1 built in	1 built in	none	1 built in / none	1 built in
Air pressure	3.6 PSI / 25 Kpa	3.6 PSI / 25 Kpa	3.6 PSI / 25 Kpa	3.6 PSI / 25 Kpa	3.6 PSI / 25 Kpa
Bow towing rings	2+1	2+1	2+1	2+1	2+1
Outside handles	2 hard handles	2 hard handles	3 hard handles	4 hard handles	5 hard handles
Transom lift rings	2 x stainless	2 x stainless	2 x stainless	2 x stainless	2 x stainless
Bow towing rings	2 x stainless	2 x stainless	2 x stainless	2 x stainless	2 x stainless
Rings for bow bag	4 x stainless	4 x stainless	4 x stainless	4 x stainless	4 x stainless
Bench seat	1 seat - 29"x8"	1 seat - 34"x8"	1 seat - 34"x8"	2 seats - 38"x8"	2 seats- 42"x8"
Seat position	one positions	one positions	two positions	two positions	two positions
Aluminum oar	4.3 ft oar x 2	5 ft oar x 2	5 ft oar x 2	5 ft oar x 2	5.7 ft oar x 2

OCEAN SERIES

SEAMAX OCEAN SERIE comes with an Aluminum floor and multi-colors. This series is designed for higher speed higher and comes with a larger cockpit space. The aluminum floor is easy to maintain with its exceptional resistance to all types of impact, it is the most popular floor request of all boat floors.



Seamax OCEAN Series Specifications				
2012 model	OCEAN290	OCEAN320	OCEAN380	OCEAN430
Overall length	9.5 ft / 2.90 m	10.5 ft / 3.2 m	12.5 ft / 3.8 m	14 ft / 4.3 m
Beam (max width)	5 ft / 1.51 m	5 ft / 1.51 m	5.5 ft / 1.68 m	6.2 ft / 1.90 m
Inner length	6 ft / 1.81 m	6.8 ft / 2.08 m	8.4 ft / 2.55 m	9.8 ft / 3.0 m
Inner width	2.2 ft / 0.67 m	2.2 ft / 0.67 m	2.6 ft / 0.8 m	3 ft / 0.9 m
Boat overall weight	110 Lbs / 50 kg	120 Lbs / 54.5 kg	176 Lbs / 80 kg	215 Lbs / 98 kg
Hull unit weight	68 Lbs / 31 kg	75 Lbs / 34 kg	92 Lbs / 42 kg	125 Lbs / 57 kg
Gross loading	805 Lbs / 365 kg	897 Lbs / 407 kg	1223 Lbs / 555 kg	2277 Lbs / 1034 kg
Passengers	3 Persons	4 Persons	5 Persons	9 Persons
Boat HP rating	10 HP / 7.4 Kw	15 HP / 11 Kw	25 HP / 18.4 Kw	35 HP / 25.7 Kw
Outboard shaft	15" short shaft	15" short shaft	15" short shaft	15" short shaft
Max motor weight	132 Lbs / 60 kg	132 Lbs / 60 kg	220 Lbs / 100 kg	262 Lbs / 119 kg
Pontoon chambers	3 individual	3 individual	3 individual	3 individual
Tube diameter	16.3 inch / 41.5 cm	16.3 inch / 41.5 cm	17.3 inch / 44 cm	19.7 inch / 50 cm
Other chamber(s)	1 keel chamber	1 keel chamber	1 keel chamber	1 keel chamber
Over pressure valve	1 built in	1 built in	1 built in	1 built in
Design air pressure	3.6 PSI / 25 Kpa	3.6 PSI / 25 Kpa	3.6 PSI / 25 Kpa	3.6 PSI / 25 Kpa
Bow handle	1 large	1 large	1 large	1 large
Outside handles	2 hard handles	2 hard handles	4 hard handles	4 hard handles
Transom lift rings	2 x stainless steel	2 x stainless steel	2 x stainless steel	2 x stainless steel
Bow towing rings	large stainless x 2	large stainless x 2	large stainless x 2	large stainless x 2
Pontoon lift rings	4 - mid size rings	4 - mid size rings	4 - mid size rings	4 - mid size rings
Rings for bow bag	4 - small size rings	4 - small size rings	4 - mid size rings	4 - mid size rings
Bench seat	1 seat - 34"x8"	1 seat - 34"x8"	2 seats - 38"x8"	2 seats - 42"x8"
Seat position	two positions	two positions	two positions	two positions
Aluminum oar	5ft Alu oar x 2	5ft Alu oar x 2	5.3ft Alu oar x 2	5.5ft Alu oar x 2
Shipping weight	119 Lbs / 54 kg	128 Lbs / 58 kg	189 Lbs / 86 kg	230 Lbs / 105 kg

For boat accessories, please contact our reseller or visit www.seamaxboat.com to purchase.

SEAMAX OCEAN T SERIES

This series will deliver high quality, heavy duty and full features inflatable boats. Ocean Turbo series is using 1.2mm PVC for chamber and 1.5mm PVC for bottom. Ocean Turbo series has highest standard for any commercial using, training purpose & rescue department, government & army. We also accept any special orders including customize your color, add in features and boat size. We also provide RIB (fiberglass bottom) option when doing your special order.

Seamax OCEAN T Series Specifications			
	OCEAN380T	OCEAN430T	OCEAN500T
Overall length	12.5 feet / 3.8 meter	14 feet / 4.3 meter	16.5 feet / 5.0 meter
Beam (overall width)	5.5 feet / 1.68 meter	6.2 feet / 1.90 meter	6.9 feet / 2.10 meter
Inner maximum length	8.4 feet / 2.55 meter	9.8 feet / 3.0 meter	11.6 feet / 3.55meter
Inner minimum width	2.6 feet / 0.8 meter	3 feet / 0.9 meter	3.1 feet / 0.95 meter
Boat overall weight	211 Lbs / 96 kg	242 Lbs / 110 kg	308 Lbs / 140 kg
Hull unit weight	130 Lbs / 59 kg	161 Lbs / 73 kg	198 Lbs / 90 kg
Gross loading	1598 Lbs / 725 kg	2309 Lbs / 1048 kg	3690 Lbs / 1675 kg
Passengers	8 Persons	11 Persons	15 Persons
Boat HP rating	25 HP / 18.4 Kw	35 HP / 25.7 Kw	50 HP / 36.8 Kw
Max passenger load	1322 Lbs / 600 kg	1817 Lbs / 825 kg	2478 Lbs / 1125 kg
Outboard shaft	15" short shaft	15" short shaft	20" short shaft
Max motor weight	220 Lbs / 100 kg	262 Lbs / 119 kg	308 Lbs / 140 kg
Pontoon chambers	5 individual chambers	5 individual chambers	5 individual chambers
Tube diameter	17.3 inch / 44 cm	19.7 inch / 50 cm	22.8 inch / 58 cm
Other chamber(s)	1 keel chamber	1 keel chamber	1 keel chamber
Over pressure valves	3 pieces	3 pieces	3 pieces
Design air pressure	3.6 PSI / 25 Kpa	3.6 PSI / 25 Kpa	3.6 PSI / 25 Kpa
Bow handle for trailer	stainless steel x 1 large	stainless steel x 1 large	stainless steel x 1 large
Outside hard handles	8 x black hard handles	10 x black hard handles	10 x black hard handles
Inner heavy duty rings	11x large stainless	13x large stainless	13x large stainless
Transom lift & tow rings	2 x stainless steel	2 x stainless steel	2 x stainless steel
Bow towing rings	large stainless ring x 2	large stainless ring x 2	large stainless ring x 2
Rear cone towing rings	large stainless ring x 4	large stainless ring x 4	large stainless ring x 4
Rings for bow bag	mid stainless ring x 4	mid stainless ring x 4	mid stainless ring x 4
Bench seat	2 aluminum - 38"x8"	2 aluminum - 42"x8"	2 aluminum - 49"x8"
Seat position	two positions - font & rear	four position bench seat	four position bench seat
Aluminum oar	5.3ft aluminum oar x 2	5.5ft aluminum oar x 2	5.7ft aluminum oar x 2
Shipping weight	230 Lbs / 105 kg	280 Lbs / 127 kg	350 Lbs / 159 kg
Shipping dimensions	52x27x15" & 41x27x9"	53x28x15" & 45x28x10"	55x29x18" & 51x29x10"



RIVER RAFT

River rafting is a tough sport and the rafts must be made to handle the bumps, scrapes, rocks and other challenges unique to rafting. SEAMAX RIVERSTAR raft is fully wrapped, built tough with a heavy-duty floor, the bottom wear patches from bow to stern, side rubbing strake, convenient, reinforced D-rings, and maintenance-free valves and overpressure valve. The self-bailing floor, with heavily reinforced drain holes on the sides, is permanently attached so there are no bulky ropes or time consuming lacing.



River Raft	SB380	SB430	SB460
Net Weight	58kg/ 128Lbs	68kg/ 150Lbs	75kg/ 165Lbs
Maximum Load	420kg /770lbs	560kg /1232lbs	700kg /1540Lbs
Max personnel (ISO)	6 adult	8 adult	10 adult
Oars	6 pieces	8 pieces	10 piece
Air Chambers	4+1+2	4+1+3	4+1+3
Outer length	12.5ft / 3.8m	14.1fg /4.3m	15.1ft /4.6m
Inner hull length	280cm	330cm	360cm
Outer width	188cm	192cm	192cm
Tube diameter	50cm	50cm	50cm
Inflatable thwart	2 piece	3 pieces	3 pieces
Aluminum Oars	7 Oars	9 Oars	11 Oars
Chamber pressure	3.6 psi	3.6 psi	3.6 psi

NOTE: RIVER RAFT IS NOT REQUIRING FOR BOAT REGISTRATION FROM TRANSPORT CANADA.



SEAMAX BOAT WARRANTY REGISTRATION

Seamax Bateau garantie d'inscription– Français

Purchaser / Owner Name:	
Phone:	
Email:	
Address:	
City:	Sate / Province:
Country:	Zip/ Post Code:
First Time Register Yes/No:	Title Transfer Yes/No:
Purchasing from (Dealer):	
Invoice Date:	Invoice Number:
Boat Model:	HIN: YLS -
Boat Color	Boat conditions New/Used:
Purchaser / Owner Signature:	Date of Registration:

This form can be downloaded from our website -- All fields are required.

This form is NOT required for Customer Directly Purchasing from Seamax or Seamax online.

Ce formulaire n'est pas requis pour la clientèle achetant directement à partir Seamax ou Seamax ligne.

Register your boat warranty by submitting this form, thanks!

Email: register@seamaxcanada.com Fax: 1-604-277-776 Mailing address is on our website

Seamax Marine & Outdoor (Canada) www.seamaxcanada.com

Seamax Accessories – Boat Bimini Top

2 Bow Bimini Top for Boats from 7ft to 10ft



3 Bow Bimini Top for Boats from 10.5ft to 13ft



4 Bow Bimini Top for Boats from 14ft to 18ft



T-Top for RIB Boat from 16ft to 24ft



Visit our website www.seamaxboat.com for detail sizes.

Seamax Accessories – Electronic Pump



Model: S-80D / S-80BD built in battery
Type: LCD Display, Double stages, Electric Control, / Build in 12V Battery(80DB)
Voltage: DC12V / Current: 20A / AC 110-240 (80DB)
80D - Weight: 3.2KG Box: 22x22x27cm / 80DB – Weight 6.2KG Box: 43x45x37cm
Max. inlet air: 500L/min
Maximum continuous working time: 30 minutes (10 °C) / 15 minutes (25 °C)
80DB Battery charge time: 6 Hours / Battery continued working time: max 30 minutes
Max. pressure: 80kpa / 11.6 PSI / Pressure Setting: By each 1 Kpa / 0.15 PSI
Max. pressure for Seamax inflatable boat – Boat Chamber 25kpa / 3.6 PSI
High Pressure AIRMAT Floor for Inflatable Boat 60kpa – 80kpa / 8.7-11 PSI
Air Valve Connector – Universal & HR Type / Optional: Leaffield Type
Length of Power Cord: 9ft / Length of Air Hose: 6ft / Accessory: Carrying case (All model)

**NOTE: SEAMAX ELECTRONIC PUMP WILL HAVE SEAMAX LABEL ON IT.
THIS IS A SPECIAL MODEL FOR ONLY SEAMAX.**

Visit our website www.seamaxboat.com for detail

Seamax Accessories – Motor Well Boat Cover



Available models

Size A - for Length 7.5-8ft / beam 4.3ft
Size B - for 9.0ft / beam 5.0ft
Size C - for 9.5-10ft / beam 5.0ft
Size D - for 10.5-10.8ft / beam 5.0ft
Size E - for 11.6-12.5ft / beam 5.5ft
Size F - for 13-14ft / beam 6.2ft
Size G - for 15.5ft / beam 6.2ft
Size H - for 16.5ft / beam 6.7ft
Size I - for 17.5ft / beam 6.7ft

Point of making

600D coated PU material & all weather water proof.
Trailer able design, it covers well with boat & motor.
Water repellent, mildew and UV resistant.
Doesn't trap heat and moisture.
Doesn't tear or shrink. 2 carrying bags for boat cover.
Elastic string design, Quick fitted and released.
Double stitched rot-proof thread.
Fit from bow to end of pontoons & over tilted motor.
For all inflatable boats including RIB with console.

Seamax Accessories – Boat Dolly

12 inch Wheels / Aluminum bracket / Stainless steel bearing & bolts



- Boat dolly is designed for boats with transom, Max loading 400Lbs, best for boat under 16 FT.
- Transom bracket screw's diameter is 5/16 inch. Locate all 4 screw's position before drilling holes.
- If inflatable boat comes with Spray Guard, please adjust the best position for installation.

More Parts & Accessories



Always Visit Our Website for Product's Information!

SEAMAX MARINE & OUTDOOR INTERNATIONAL

120-11791 MACHINA WAY, RICHMOND, BC, CANADA V7A 4V3

www.seamaxcanada.com www.seamaxboat.com 1877-907-7766 604-277-7766